

# Woonona Junior Covid Plan

Over head view detailing overall view of paths and Nippers area

Access to the pool via Kurraba rd and back the same way as there will only be 1 way traffic at start and end. If needed, back via the beach

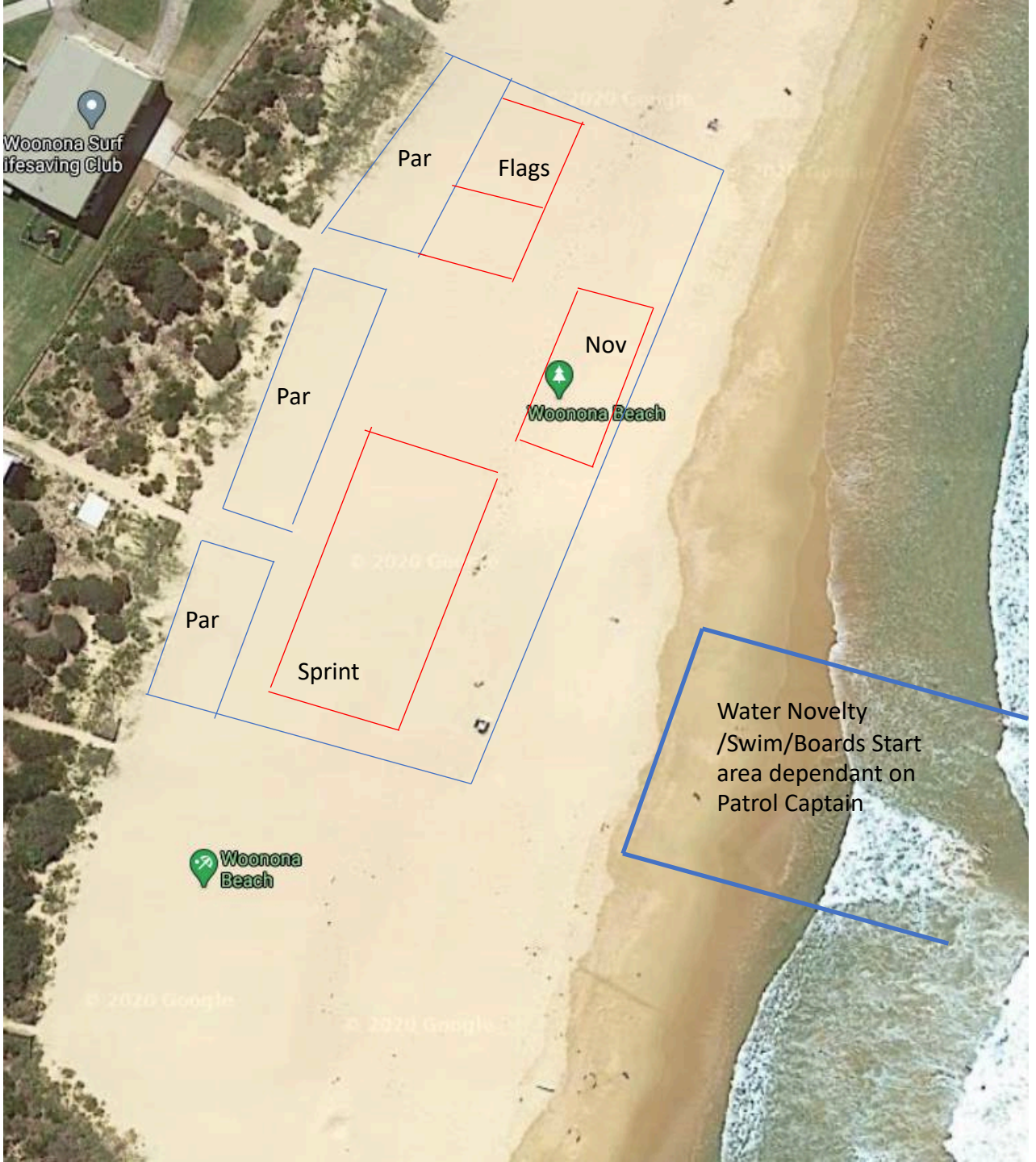
Parents in Par areas

Only Unknown is where the flags are for wades etc. Will have to work with patrol, possibly extra flags. Should be able to distance from public or cordon off a path. Difficult to do on busy days, cannot block North South traffic fully on beach





Closer Over head view detailing layout of nippers





Muster on South grass area, near the new door. Massive area. Can fit all ages @1.5 or 2m spacing across. Length is an issue Easternmost perimeters are the fences, No public access on path from Roller Doors and Guard towers, However, 1 path north or south from. Those there is easy access and showers. Only 2 paths blocked. This is where we get details of parents



Can do staggered times for age groups if we need. Have changed times to 930 muster for 1000 start to coincide with Patrol opening the beach. We can then send the older Kids straight into the water, giving us more of the beach. Question? Do we need to get a permit from council to close of public areas an the beach



Stars indicate where we get details of parents using the QR code allocated to the club. Will also have sign on sheets as backups, as they have Nippers names and Mobile numbers. Sanitiser stations will be there as well. There will be 3 sign in stations. Much lower numbers anticipated this year due to Covid.



Parents will then stand at the back, away from the kids.



Path onto the beach from muster point  
Cordoned off from the public as is the muster area all the way  
to the central access path outside the roller doors  
Quarantined area. If public needs showers they can use the  
Northern or southern ones from the clubhouse.





The Beach. Keep all activities between the Roller Door entrance and the South entrance where the guard tower  
Shortened Sprints. Flags as usual.  
Segment off entire area. Parents area at the top (they can see it all). Separate events by at least 10m  
Use Bollards and Tape to do so.





Taken from the roller door path looking east sorry about the perspective but is a panorama

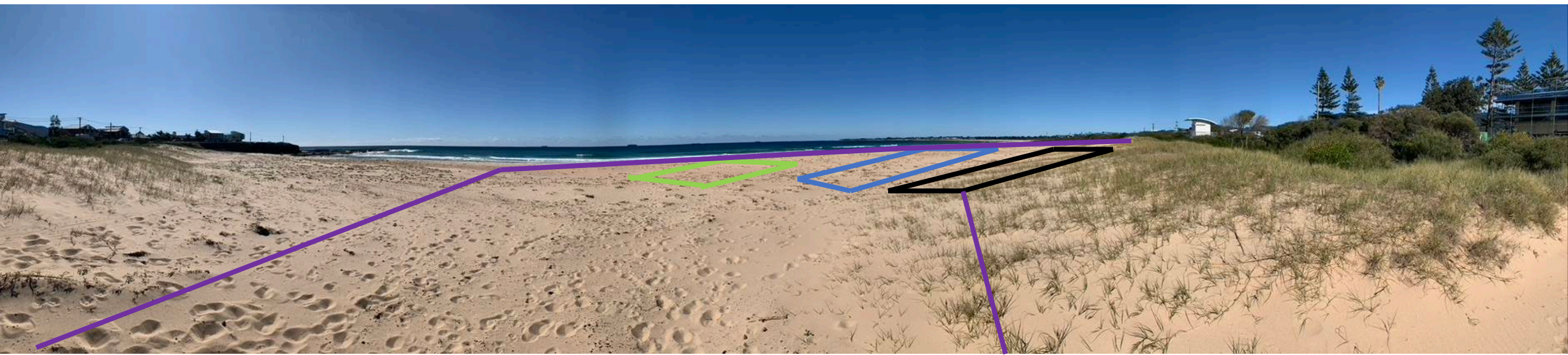
Purple is the cordon, Black is the parents, Green is flags, blue is sprint

Now we just have to get them to the surf

Patrol Area will change. All we can do is keep them in an orderly bunch and work with the captain to keep them separate

Suggest using a different set of flags for Nippers. So three red and yellow flags on the beach.

Northern 2 for us, southern 2 for the public. Give me better suggestions those of you that are Patrol members/Captains. Not sure how to manage separation in the surf

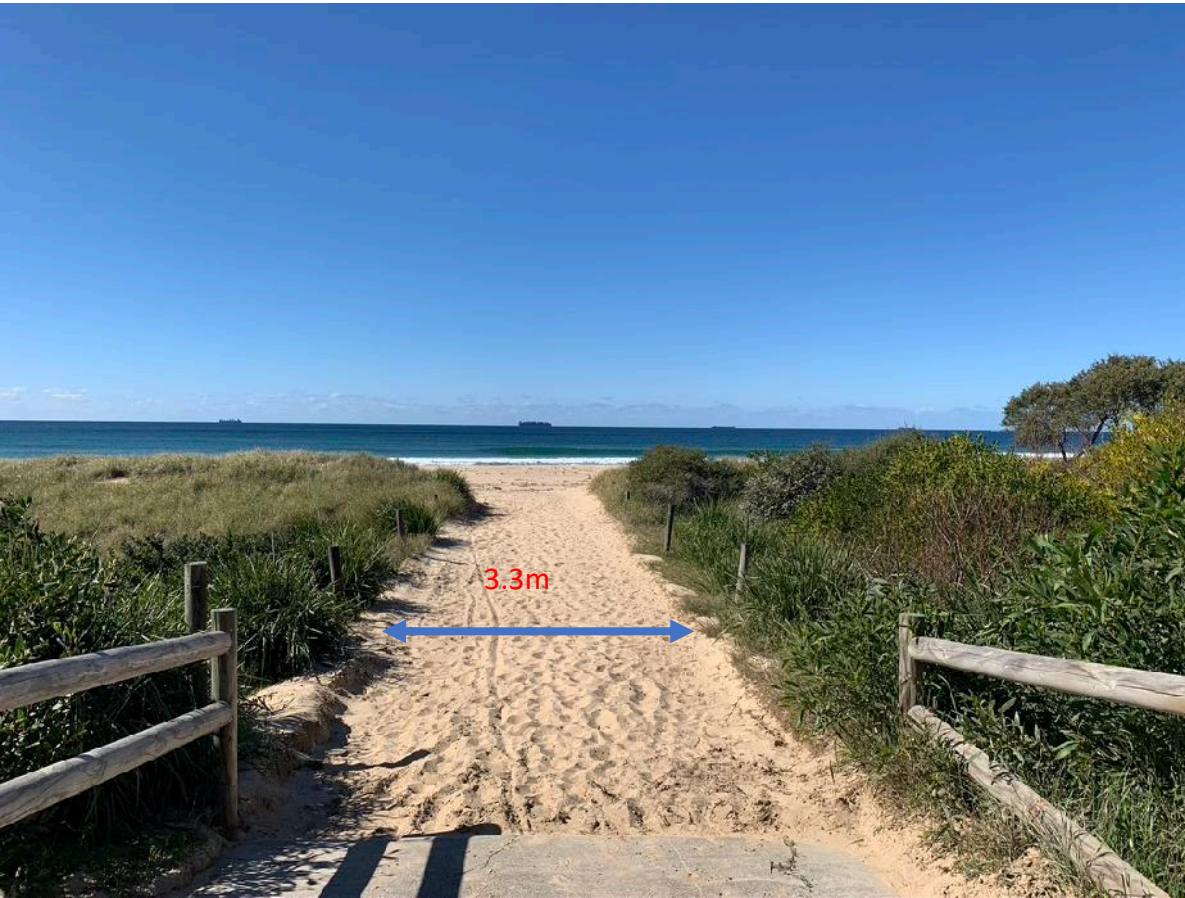




This is the path off the beach to maximise use of the showers for the Nippers and the traffic from the patrol to the beach will be in the Morning

We should be able to manage the spacing between patrol and equipment by being sensible and we control the area, easy to manage

Alternate is to use the 1 path for Nippers on and off the beach as will only be 1 way traffic at start and end





To access the Pool for the younger ones.

We have this wide area to move in from the road and can move the kids from the road path to the grassy area.

Then down the road to the northern muster point at the vehicle area at the pool.

We can separate the kids and the kids will only be moving in one direction at a time.

If we need a separate path the kids can go back via the beach to the Clubhouse path. One Pinch Point there that we cant avoid at the stairs





North and South Stairs at the pool  
These are too thin and should be used by the public for access to the pool

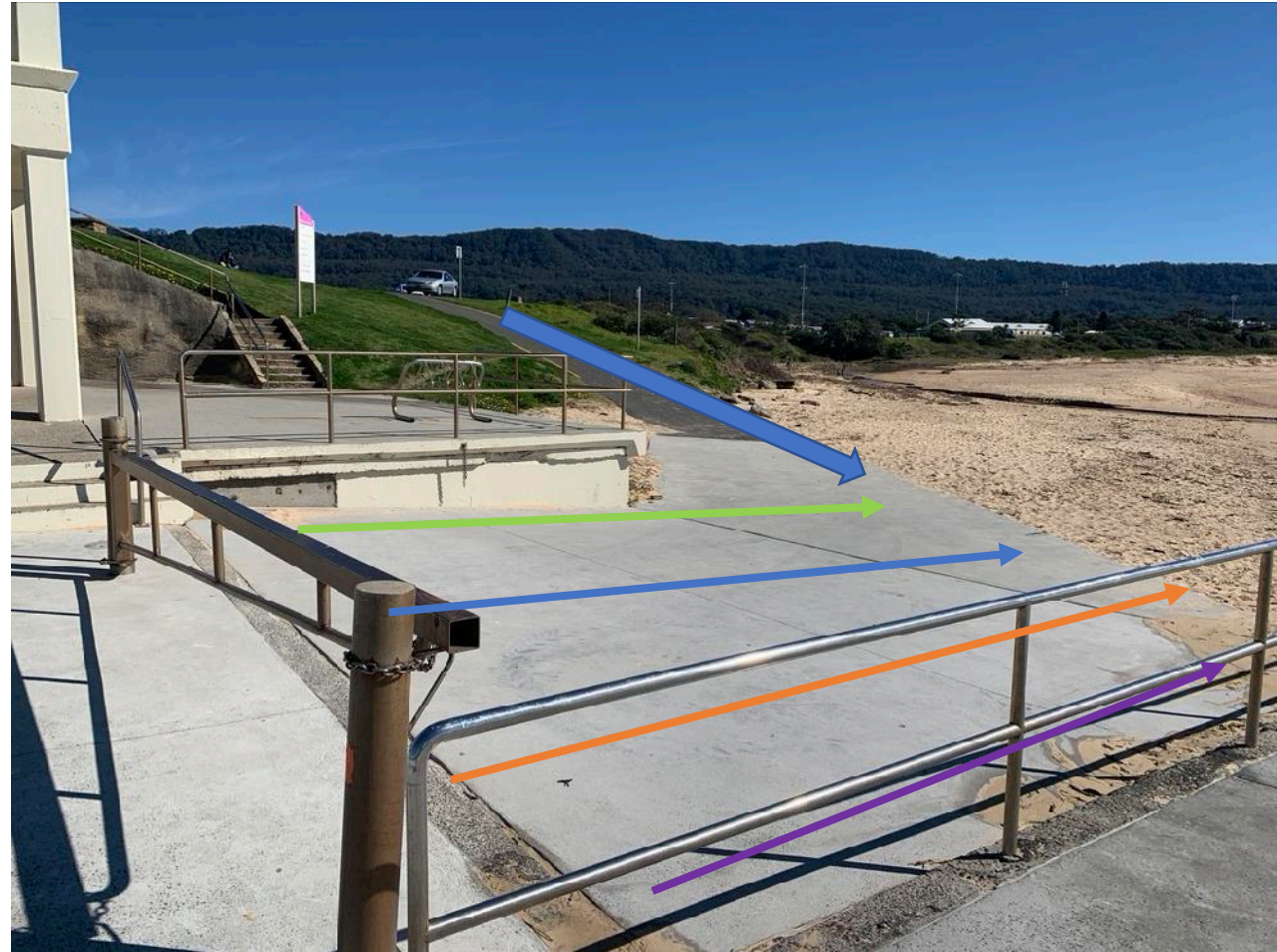
Only pinch point is if we are using the bottom stairs to exit the pool along the beach.

Support going in and out via the north road and vehicle muster point.





Pool muster point at the North end of the pool vehicle access.  
4 lines possible if needed, can back onto the sand  
Access down the road from the back  
Then would cordon off North end of the pool for U6-U8  
Boards would be wiped clean if required between kids





Over head view detailing overall view of paths and Nippers area



Parents will then stand.